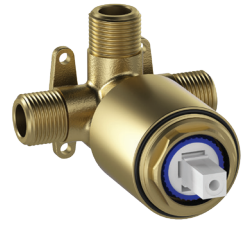


**ELEMENTi®**

MAINS PRESSURE  
SHOWER VALVE



# PROGRESSIVE SHOWER MIXER

The Tita Progressive shower mixer is an equal mains pressure shower valve. The benefit of a Progressive Shower Mixer is that its clockwise rotational action opens the cold-water flow first, then gradually introduces the hot water to achieve a comfortable showering temperature and then continuing to rotate the handle full hot water flow will be achieved. This rotational / progressive temperature functionality eliminates the risk of accidentally delivering hot water by always opening the cold-water flow first, thus reducing the risk of accidental scalding and the wastage of hot water.

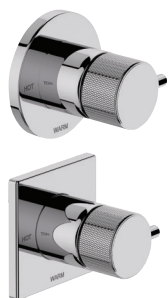
The temperature adjustment mechanism is a ceramic cartridge which being progressive in one direction is more durable than a normal tilt and turn ceramic cartridge and delivers a full flow within a quarter turn.

A pointer on the handle indicates the expected water temperature relative to the markings on the face plate (Off, Cold Warm and Hot).

## TITA PROGRESSIVE SHOWER MIXER

MAINS PRESSURE / Ø90  
INCLUDES ROUND AND SQUARE FACEPLATE

CHROME:  
43470.02



BRUSHED NICKEL:  
43470.04



GUN METAL:  
43470.29



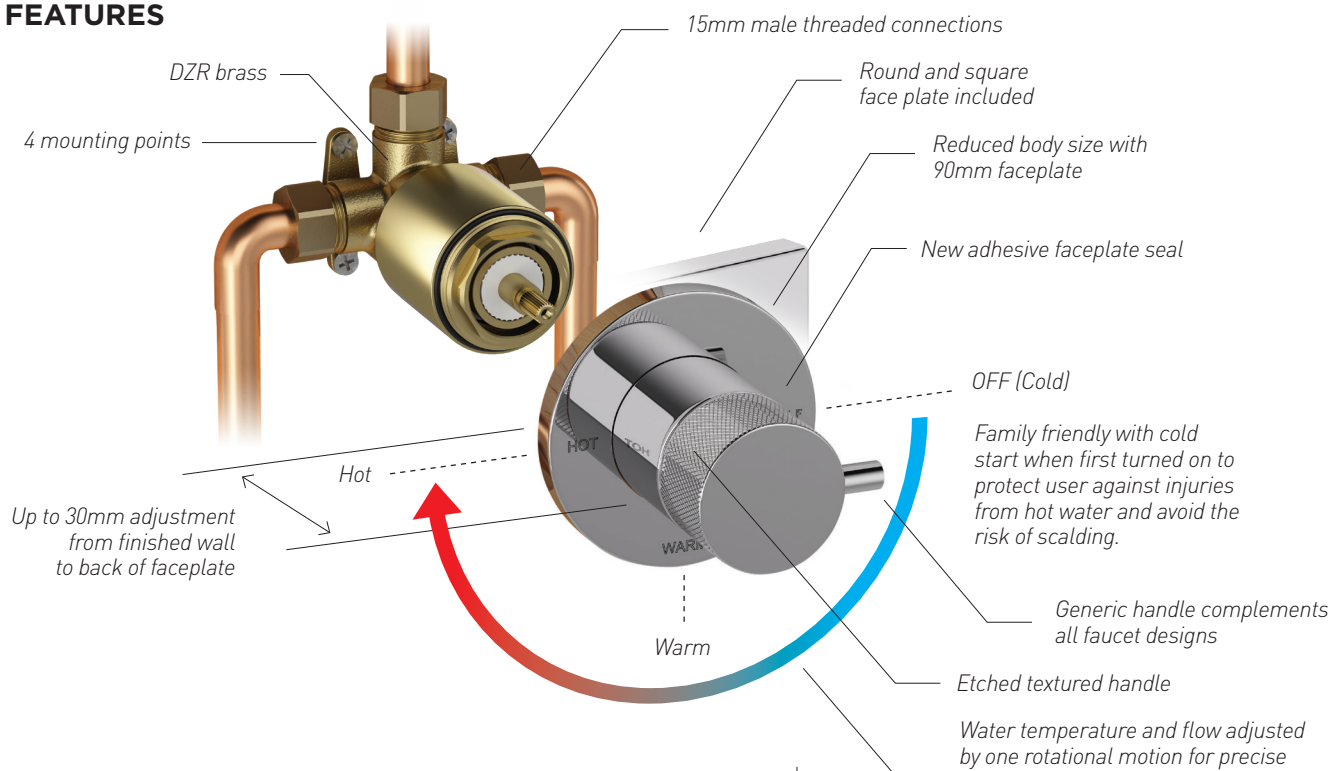
BLACK:  
43470.13



BRUSHED BRASS:  
43470.07

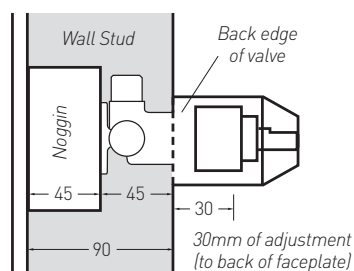


## FEATURES



## 30MM ADJUSTMENT RANGE

The Mains Pressure shower mixer features a 30mm adjustment range allowing for different installation requirements and thickness of wall/cladding materials.



## OPTIONAL 13MM EXTENSION KIT

43mm of adjustment (to the back of faceplate) can be achieved using the 13mm extension kit. Code: 43472.00



TEN YEAR  
GUARANTEE\*



FIVE YEAR  
COLOURED FINISH  
GUARANTEE\*



MAINS  
PRESSURE



ETCHED  
HANDLE



FLAWLESS  
FINISH



EFFORTLESS  
CONTROL

# SINGLE LEVER SHOWER MIXER

A Single Lever Ceramic Cartridge Shower Mixer allows the user to control the volume of water by lifting a lever and adjusting the temperature by moving the lever from left to right. This action allows the user to control temperature and volume.

## UNO SHOWER MIXER

Ø90 / MAINS PRESSURE  
OPTIONAL EXTENSION KIT  
AVAILABLE (EXTENDS 13MM)  
EXTENDS DEPTH ADJUSTMENT  
(SOLD SEPARATELY)  
CODE: 43472.00

CHROME:  
43370.02



BRUSHED NICKEL:  
43370.04



GUN METAL:  
43370.29



BLACK:  
43370.13



BRUSHED BRASS:  
43370.07



## UNO ETCH SHOWER MIXER

Ø90 / MAINS PRESSURE  
OPTIONAL EXTENSION KIT  
AVAILABLE (EXTENDS 13MM)  
EXTENDS DEPTH ADJUSTMENT  
(SOLD SEPARATELY)  
CODE: 43472.00

BRUSHED NICKEL:  
41675.04



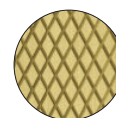
GUN METAL:  
41675.29



BLACK:  
41675.13



BRUSHED BRASS:  
41675.07



**FEATURE**  
Etched handle for  
industrial aesthetic  
and additional grip.

## SAVON SHOWER MIXER

Ø90 / MAINS PRESSURE  
OPTIONAL EXTENSION KIT  
AVAILABLE (EXTENDS 13MM)  
EXTENDS DEPTH ADJUSTMENT  
(SOLD SEPARATELY)  
CODE: 43472.00

CHROME:  
43170.02



BRUSHED NICKEL:  
43170.04



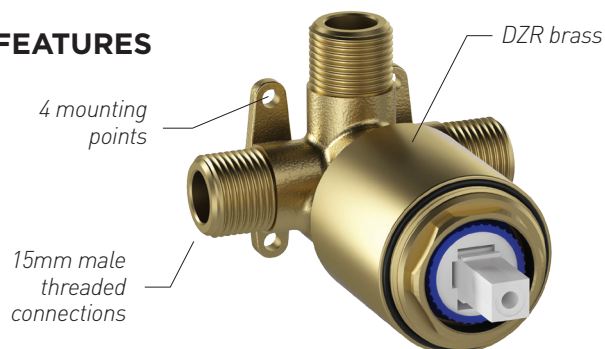
GUN METAL:  
43170.29



BLACK:  
43170.13



## FEATURES



Reduced 90mm  
faceplate

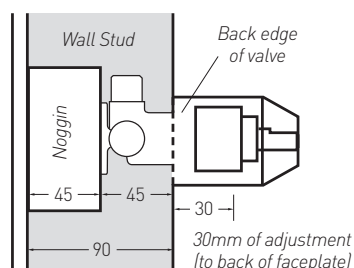
New adhesive  
faceplate seal



**Note:** The cartridge and handle can be changed to create a progressive mixer.

## 30MM ADJUSTMENT RANGE

The Mains Pressure shower mixer features a 30mm adjustment range allowing for different installation requirements and thickness of wall/cladding materials.



## OPTIONAL 13MM EXTENSION KIT

43mm of adjustment (to the back of faceplate) can be achieved using the 13mm extension kit. Code: 43472.00



TEN YEAR  
GUARANTEE\*



FIVE YEAR  
COLOURED FINISH  
GUARANTEE\*



MAINS  
PRESSURE



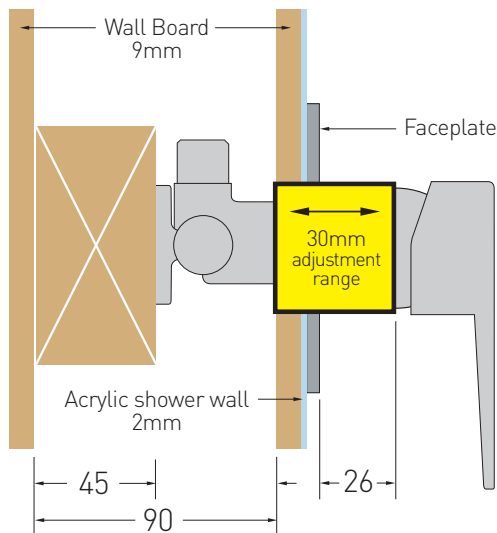
FLAWLESS  
FINISH



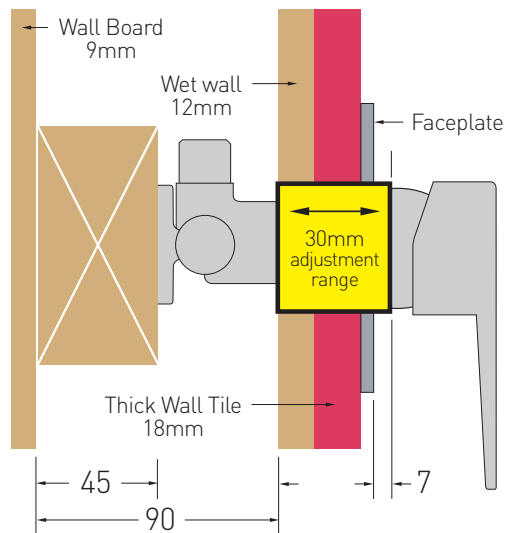
EFFORTLESS  
CONTROL

# ADJUSTMENT EXAMPLES

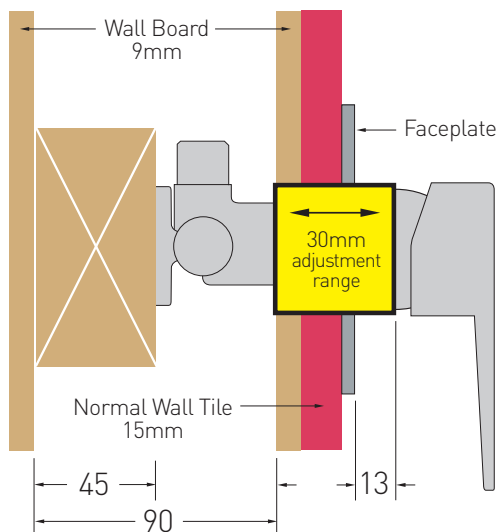
2MM ACRYLIC SHOWER WALL INSTALL



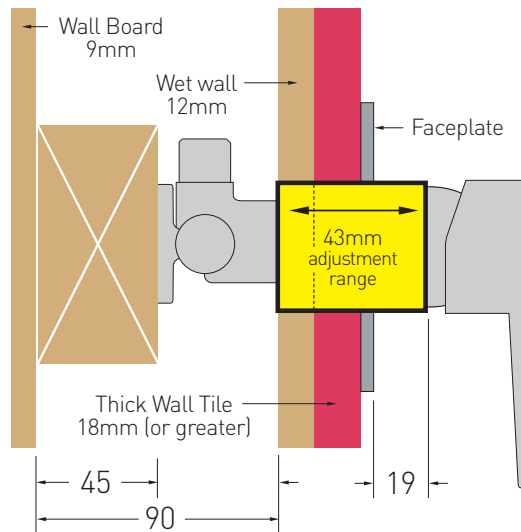
12MM THICK WET WALL AND 18MM THICK WALL TILE INSTALL



9MM THICK WET WALL AND 15MM TILE



12MM THICK WET WALL AND 18MM THICK WALL TILE (OR GREATER) DEEP ROUGH EXTENSION INSTALL



## ELEMENTi®

*Elementi is Robertson Bathware's own unique brand. Born from decades of experience, and inspired by the latest international design trends, Elementi is a synthesis of innovation and style.*

Distributed by

**robertson®**  
BATHWARE  
— SINCE 1987 —

Ph: +64 (0)9 573 0490  
Fax: +64 (0)9 573 0495  
Email: [sales@robertson.co.nz](mailto:sales@robertson.co.nz)

**ROBERTSON.CO.NZ**